

Brading Road, Brixton, SW2

3 bedroom house for sale

£775,000

Freehold

Property Details

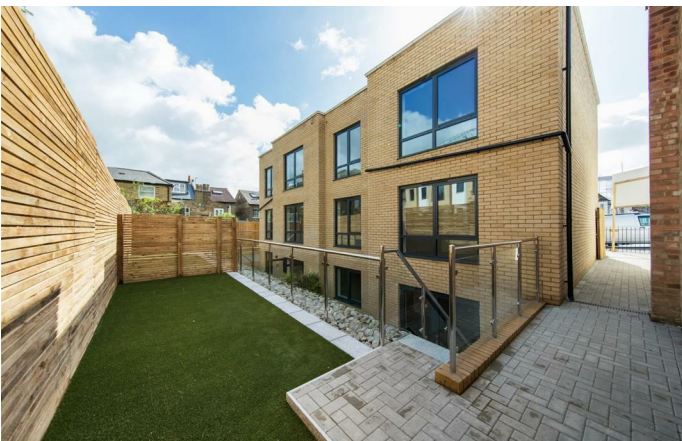
A spacious three or four double bedroom semi-detached mews house with two bathrooms in a quiet Victorian street with easy access to the transport links within Brixton, Herne Hill and Clapham. This wonderful contemporary home has over 1400 square feet of internal floor space and a two tiered private garden. The property has been thoughtfully created with the design team's signature architectural finish, attention to detail, contemporary style and luxury, while being engineered to meet all the requirements of modern living. Stairs lead down to a majestic, 'L-shaped' open plan reception and kitchen diner with direct access into the rear garden. Access to private outside space is more important than ever and the double doors allow the living space to flow seamlessly into the private garden at the rear. There is convenient side access, a pretty paved area ideal for dining al-fresco and stairs that lead to a low maintenance artificial grassed section, perfect for entertaining and relaxing in the warmer months. The kitchen is beautifully finished and has been specifically designed to complement the layout of the house. The layout on the floor above is flexible, currently set up as a separate reception room and a double bedroom with an en-suite bathroom, the living room could be set up as an additional bedroom, depending on the new purchasers search requirements. Last but not least there a beautiful family bathroom and two further double bedrooms on the first floor. The house was built in 2018 with a Ten Year NHBC Guarantee, so there are around seven years remaining on the guarantee.

Features

- Three or four double bedrooms
- Modern semi-detached house
- Contemporary design
- Over 1400 square feet of internal living space
- Flexible layout
- Private two-tiered garden
- Quiet residential street
- Walking distance to Brixton, Clapham, Streatham and Herne Hill
- Freehold

Council tax band E EPC rating (null)





Brading Road, Brixton, SW2

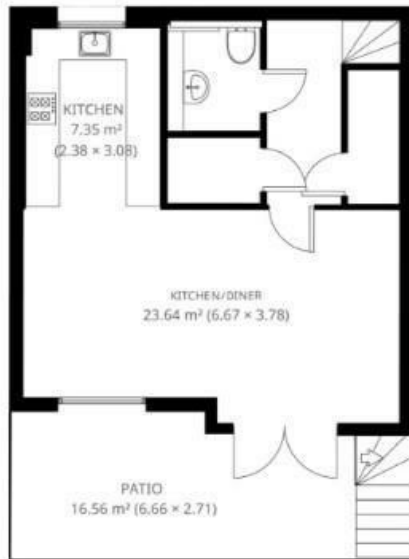
Brading Road

K

3 Bed house
Approx internal area:

1436 sqft 133 sqm

While we do try our very best, floor plans are produced as a guide only and we take no responsibility for the precise accuracy with which any property is represented



Brading Road, Brixton, SW2

